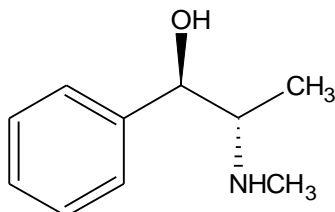




(l)-Ephedrine Base Anhydrous USP



l-Ephedrine base anhydrous

Molecular Formula: C₁₀H₁₅NO

Molecular weight: 165.23

CAS No.: [299-42-3]

Chemical Name:

1. (1R,2S)-2-Methylamino-1-phenyl propan-1-ol
2. Benzenemethanol, α -[1-(methylamino)ethyl]-, [R-(R*,S*)]

Specifications:

- | | |
|---------------------------|--|
| 1. Description | : Colourless to pale yellow, thick, viscous liquid |
| 2. Solubility | : 1 g is clearly and completely soluble in toluene |
| 3. Identification | : a) Infrared spectrum of sample is concordant with the reference spectrum.
b) Sample dissolved in toluene, treated with CuSO ₄ solution and NaOH solution shows pink colour in toluene layer. |
| 4. Specific rotation | : Between - 40.3° and - 43.3° (25 mg / ml in 0.6 N HCl) |
| 5. Related Substances | : NMT 0.5 % w/w |
| 6. Chloride | : NMT 5 ppm |
| 7. Water | : NMT 0.5 % |
| 8. Residue on ignition | : NMT 0.1 % |
| 9. Assay | : Between 99.0 % and 101.0 % (dry basis) |
| 10. Residual solvents | |
| Diisopropyl ether content | : Not more than 2,500 ppm |

Therapeutic indications : Bronchodilator

Packing: Packed in 25/50/100 kg HDPE drums under nitrogen.

Storage: Store below 25°C.