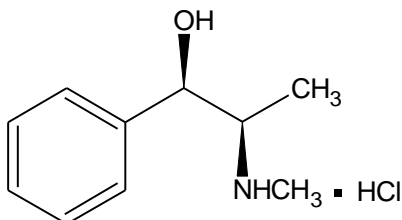


(1)-Pseudoephedrine Hydrochloride



I-Pseudoephedrine HCl

Molecular Formula: C₁₀H₁₅NO. HCl

Molecular weight: 201.70

CAS No.: [670-40-6]

Chemical Name:

1. (1R,2R)-2-Methylamino-1-phenyl propan-1-ol, Hydrochloride
2. Benzenemethanol, α -[1-(methylamino)ethyl]-, [R-(R*,R*)], Hydrochloride

Specifications:

1. Description : White to off white crystalline powder
2. Identification : a) Infrared spectrum of sample is concordant with standard
b) A solution of sample respond to test for chloride
3. Melting range : Between 182° and 186°C
4. Specific rotation : Between - 61.0° and - 62.5° (5 % solution in water)
5. pH : Between 4.0 and 6.0 (5 % solution in water)
6. Loss on drying : NMT 0.5 %
7. Assay : Between 98.0 % and 100.5 % (dried basis)

Use: Chiral Auxiliary, Chiral Resolving agent

Packing: Packed in double lined polyethylene bags in 25 kg fiber drums.

Storage: Store below 35°C.