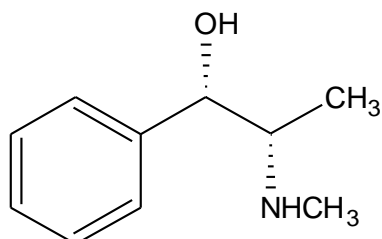


### (d)-Pseudoephedrine Base



d-Pseudoephedrine base

**Molecular Formula:** C<sub>10</sub>H<sub>15</sub>NO

**Molecular weight:** 165.23

**CAS No.:** [90-82-4]

**Chemical Name:**

1. (1S,2S)-2-Methylamino-1-phenyl propan-1-ol
2. Benzenemethanol, α-[1-(methylamino)ethyl]-, [S-(R\*,R\*)]

**Specifications:**

- |                           |  |
|---------------------------|--|
| 1. Description            | : White to off white crystalline powder  |
| 2. Identification         | : Sample dissolved in toluene, treated with CuSO <sub>4</sub> solution and NaOH solution shows pink colour in toluene layer. |
| 3. Melting range          | : Between 117° and 120°C; range between beginning and end of melting does not exceed 2°C                                     |
| 4. Specific Rotation      | : Between + 60° and + 62.5°  |
| 5. Moisture content       | : NMT 1.0 % w/w  |
| 6. Residue on ignition    | : NMT 0.1 % w/w  |
| 7. Chloride               | : NMT 0.15 % w/w   |
| 8. Sulphate               | : NMT 100 ppm  |
| 9. Solubility and clarity | : A 10 % solution in toluene is clearly and completely soluble.  |
| 10. Assay                 | : Between 98.0 % and 100.5 % w/w (dried basis)   |

**Therapeutic indications:** Decongestant

**Packing:** Packed in double lined polyethylene bags in 25 kg fiber drums.

**Storage:** Store below 35°C.