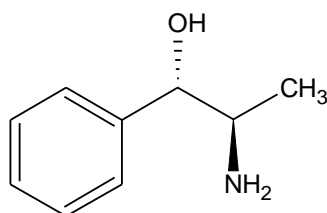


**(d)-Norephedrine Base**



d-Norephedrine Base

**Molecular Formula:** C<sub>9</sub>H<sub>13</sub>NO

**Molecular weight:** 151.21

**CAS No.:** [37577-28-9]

**Chemical Name:**

1. (1S,2R)-2-Amino-1-phenyl propan-1-ol
2. Benzenemethanol,  $\alpha$ -(1-aminoethyl), [S-(R\*,S\*)]

**Specifications:**

1. Description : White to light cream, crystalline mass or low melting solid.
2. Water (By KF) : NMT 0.5 %
3. Specific rotation : Between + 40° and + 42° (5 % in 1 M HCl)
4. Assay (Non aq. titration) : 98 % Minimum (dry basis)

**Use:** Chiral Auxiliary, Chiral Resolving Agent

**Packing:** Packed in double lined polyethylene bags in 25 kg fiber drums.

**Storage:** Store below 35°C.