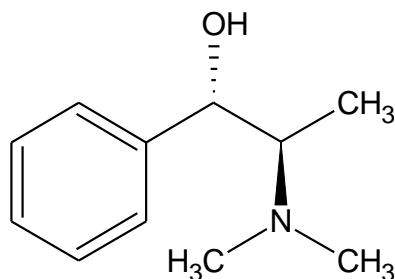


d-(+)-N-Methylephedrine Base



Molecular Formula: C₁₁H₁₇NO

Molecular weight: 179.26

CAS No.: [42151-56-4]

Chemical Name:

1. (1S,2R)-2-Amino-1-phenyl propan-1-ol
2. Benzenemethanol, α -[(1-dimethylamino)ethyl], [S-(R*,S*)]
3. (1S,2R)-(+)-2-Dimethylamino-1-phenylpropanol

Specifications:

1. Description : White to off white crystalline powder
2. Melting range : 86° to 88°C
3. Specific rotation : + 30 ± 2° (c = 4.5 % in methanol)
4. Loss on drying : Not more than 0.5 % w/w
5. Assay : Min. 98.0 % w/w (dried basis)
(Non aq. titration)

Packing: On request

Storage: Store below 35°C.