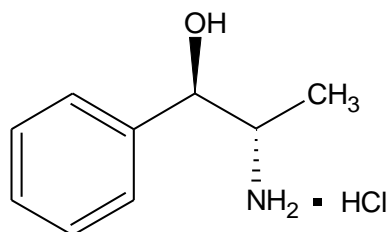




## (1)-Norephedrine Hydrochloride



l-Norephedrine HCl

**Molecular Formula:** C<sub>9</sub>H<sub>13</sub>NO. HCl

**Molecular weight:** 187.67

**CAS No.:** [3198-15-0]

**Chemical Name:**

(1R,2S)-2-Amino-1-phenyl propan-1-ol, Hydrochloride

**Specifications:**

1. Description : White crystalline powder.
2. Identification : IR spectrum of sample matches with standard.
3. Melting range : 171 to 174°C
4. Specific rotation : -32 to -34.5° (c = 5 % in water)
5. Clarity and colour of solution : Clear and colourless (5 % solution in water)
6. Loss on drying : Not more than 0.5 % w/w
7. Sulphate : Passes the test.
8. pH : 4.5 to 7.0 (2 % solution in water)
9. Residue on ignition : Not more than 0.5 % w/w
10. Assay (Non Aq. Titration): Between 99.0 % and 101.5 % w/w (dried basis)

**Therapeutic indications:** Anorexic

**Use:** Chiral Auxiliary, Chiral Resolving Agent

**Packing:** Packed in double lined polyethylene bags in 25 kg fiber drums.

**Storage:** Store below 35°C.