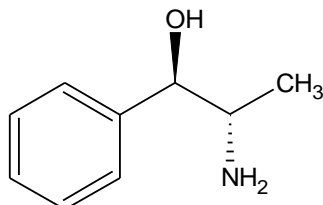


(1)-Norephedrine Base



I-Norephedrine base

Molecular Formula: C₉H₁₃NO

Molecular weight: 151.21

CAS No.: [492-41-1]

Chemical Name:

(1R,2S)-2-Amino-1-phenyl propan-1-ol

Specifications:

- | | |
|----------------------|--|
| 1. Description | : White to light cream, crystalline mass |
| 2. Water | : NMT 0.5 % |
| 3. Melting range | : 48° to 53°C |
| 4. Specific rotation | : Between - 40° and - 42° (5 % in 1 M HCl) |
| 5. Assay | : 98.0 % Minimum (dried basis) |

Therapeutic indications: Anorexic

Use: Chiral Auxiliary, Chiral Resolving Agent

Packing: Packed in double lined polyethylene bags in 25 kg fiber drums.

Storage: Store below 35°C.