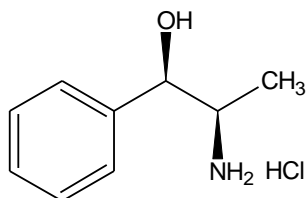


(1)-Norpseudoephedrine Hydrochloride



I-Norpseudoephedrine HCl

Molecular Formula: C₉H₁₃NO. HCl

Molecular weight: 187.67

CAS No.: [53643-20-2]

Chemical Name:

(1R,2R)-2-Amino-1-phenyl propan-1-ol, Hydrochloride

Specifications:

1. Description : White to off white crystalline powder
2. Identification : IR spectrum of sample matches with standard.
3. Melting range : 180 to 183°C
4. Specific rotation : - 41.0 to - 44° (c = 5 % in water)
5. Loss on drying : Not more than 0.5 % w/w
6. Assay : 98.0 to 101.0 % w/w (dried basis)

Use: Chiral Auxiliary, Chiral Resolving Agent

Packing: Packed in double lined polyethylene bags in 25 kg fiber drums.

Storage: Store below 35°C.