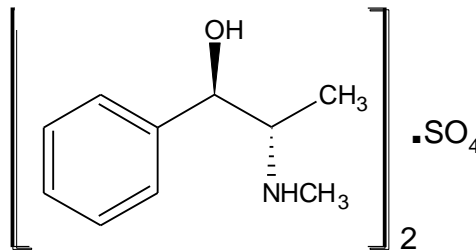


(1)-Ephedrine Sulfate USP



Molecular Formula: C₂₀H₃₀N₂O₂ · H₂SO₄

Molecular weight: 428.55

CAS No.: [134-72-5]

Chemical Name:

1. (1R,2S)-2-Methylamino-1-phenyl propan-1-ol, Sulfate
2. Benzenemethanol, α-[1-(methylamino)ethyl]-, [R-(R*,S*)], Sulfate (2:1) salt

Specifications:

- | | |
|----------------------------------|---|
| 1. Description | : Colourless crystals or white crystalline powder |
| 2. Identification | : a) Infrared spectrum of sample is concordant with the reference spectrum.
b) A solution of sample responds to test for sulfate |
| 3. Specific rotation | : Between - 30.5° and - 32.5° (5 % solution in water) |
| 4. Acidity & alkalinity | : NMT 0.1 ml of 0.02 N H ₂ SO ₄ or NMT 0.20 ml of 0.02 N NaOH solution |
| 5. Chloride | : NMT 0.14 % |
| 6. Solubility | : Freely soluble in water |
| 7. Ordinary impurities | : NMT 2.0 % |
| 8. Residue on ignition | : NMT 0.1 % |
| 9. Loss on drying | : NMT 0.5 % |
| 10. Organic volatile impurities: | Must pass the test |
| 11. Assay | : Between 98.0 % and 101.0 % (dry basis) |

Therapeutic indications: Bronchodilator

Packing: Packed in double lined polyethylene bags in 25 kg fiber drums.

Storage: Store below 35°C.