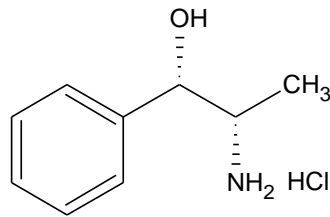


(d)-Norpseudoephedrine Hydrochloride



d - Norpseudoephedrine HCl

Molecular Formula: C₉H₁₃NO. HCl

Molecular weight: 187.67

CAS No.: [2153-98-2]

Chemical Name:

(1S,2S)-2-Amino-1-phenyl propan-1-ol, Hydrochloride

Specifications:

1. Description : White to off white crystalline powder
2. Identification : IR spectrum of sample matches with standard.
3. Melting range : 181° to 183°C
4. Specific rotation : + 41.0 to + 43.5° (c = 5 % in water)
5. Loss on drying : Not more than 0.5 % w/w
6. Assay : 98.0 to 101.0 % w/w (dried basis)

Therapeutic indications: Anorexic

Use: Chiral Resolving Agent

Packing: Packed in double lined polyethylene bags in 25 kg fiber drums.

Storage: Store below 35°C.