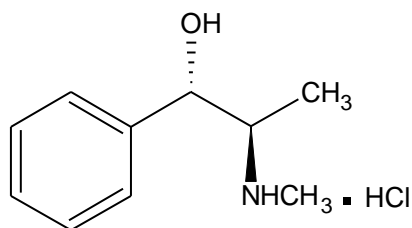


(d)-Ephedrine Hydrochloride



d-Ephedrine HCl

Molecular Formula: C₁₀H₁₅NO. HCl

Molecular weight: 201.70

CAS No.: [24221-86-1]

Chemical Name:

1. Benzenemethanol, α -[1-(methylamino)ethyl]-, hydrochloride, [S-(R*,S*)],
2. (1S,2R)-2-Methylamino-1-phenyl propan-1-ol hydrochloride

Specifications:

1. Description : Colourless crystals or white crystalline powder
2. Identification : a) Infrared spectrum of sample is concordant with the reference spectrum.
b) A solution of sample respond to test for chloride
3. Solubility : Freely soluble in water, soluble in 95 % ethanol, practically insoluble in ether
4. Melting range : Between 217° and 220°C, the range between beginning and end of melting does not exceed 2°C
5. Specific rotation : Between + 33.0° and + 35.5° (5 % solution in water)
6. Acidity & alkalinity : NMT 0.10 ml of 0.02 N H₂SO₄ or NMT 0.20 ml of 0.02 N NaOH solution
7. Clarity and colour of solution: A 10 % w/v solution of sample in water is clear and colourless.
8. Sulphate : Must pass the test
9. Ordinary impurities : Must pass the test
10. Residue on ignition : NMT 0.1 %
11. Loss on drying : NMT 0.5 %
12. Assay : Between 99.0 % and 101.0 % (dried basis)

Use: Chiral Auxiliary, Chiral Resolving agent

Packing: Packed in double lined polyethylene bags in 25 kg fiber drums.

Storage: Store below 35°C.