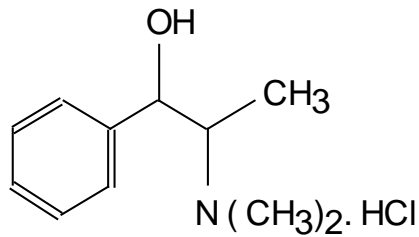


(dl)-N-Methyl ephedrine Hydrochloride JP



dl - N - Methyl ephedrine HCl

Molecular Formula: C₁₁H₁₇NO. HCl

Molecular weight: 215.71

CAS No.: [18760-80-0]

Chemical Name:

(1RS,2SR)-2-Dimethylamino-1-phenyl propan-1-ol, Hydrochloride.

Specifications:

- | | |
|---------------------------|--|
| 1. Description | : White crystalline powder |
| 2. Identification | : a) Sample mixed with CuSO ₄ solution and NaOH solution shows blue purple colour.
b) Picrate test
c) A solution of sample responds to test for chlorides |
| 3. Melting range | : Between 207° and 211°C; range between beginning and end of melting does not exceed 2°C |
| 4. Acidity & alkalinity | : NMT 0.10 ml of 0.020 N H ₂ SO ₄ or NMT 0.20 ml of 0.020 N NaOH solution |
| 5. Loss on drying | : NMT 0.5 % |
| 6. Residue on ignition | : NMT 0.1 % w/w |
| 7. Assay (potentiometric) | : Not less than 99.0 % w/w (dried basis) |

Therapeutic indications: Analeptic, Respiratory Stimulant

Packing: Packed in double lined polyethylene bags in 25 kg fiber drums.

Storage: Store below 35°C.